







EMPFOHLENE BEZUGSSTOFFE RECOMMENDED UPHOLSTERY

Preisgruppe price groups	Bezugsstoffe/ Oberflächen fabrics/surfaces	PRODUKTION + WERKSTATT PRODUCTION AREA + WORKSHOP	LABOR LABORATORY	ESD-BEREICH ESD AREA	REINRAUM CLEAN-ROOM	STEH(SITZ)ARBEITSPLATZ STANDING-(SEAT) WORKSTATION	24-STUNDEN-EINSATZ 24-HOUR USE
							
P	King ID	● ¹					
P	King ID ⚡			● ¹			
P	Valencia ID <small>Kunstleder imitation leather</small>	○ ¹	● ¹		○ ²		
A	Ultra ID	● ¹					
P	Fabio	○					
A	King	● ¹					○
A	King ⚡			●			
A	Madrid ⚡ <small>Kunstleder imitation leather</small>			●	●		
A	Relax	○					○
A	Valencia <small>Kunstleder imitation leather</small>	○	●		○ ³		
B	Fame	●					●
B	Select	●					●
B	Parotega NF <small>Kunstleder imitation leather</small>	○	●		○ ³		
B	Ultra	●					●
B	Xtreme	●					○
E	Leder						●
F	Premium-Leder Premium leather						●
siehe Preisgruppe see price groups	Holz wood	●					
siehe Preisgruppe see price groups	PU (Polyurethan) PU (polyurethane)	●	●	●	●	●	

Stoffkollektionen
ausschließlich
für Tec identity
Fabric collections
for Tec identity
only

¹ für I for Tec identity
² für I for Tec identity
(nicht leitfähig
not conductive)

³ für I for Tec profile
(nicht leitfähig
not conductive)

● Bezugsmaterial besonders geeignet
especially suitable fabric upholstery
○ Bezugsmaterial geeignet
suitable fabric upholstery

BEZUGSSTOFFE TEC identity

UPHOLSTERY FABRICS TEC identity

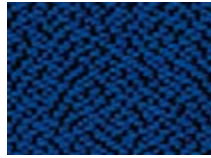
Farbabweichungen sind drucktechnisch bedingt und bieten keinen Anlass zu Reklamationen.
Differences in colour compared to the original fabrics are unavoidable in printed catalogues and do not constitute grounds for complaint.

King ID : P

Zusammensetzung: 100% Trevira CS® (Polyester)
Spezifikation wie King:A,
jedoch mit selektiver Farbauswahl

Composition: 100% Trevira CS® (polyester)
Specification as King: A,
but with selected colour selection

nur für Tec identity | only for Tec identity



381.020 (9268)
Standardblau
Classic blue



381.030 (9289)
Grau
Metal grey



381.033 (8033)
Schwarz
Midnight black

King ID ⚡ : P

Zusammensetzung: 100% Trevira CS® (Polyester)
Spezifikation wie King leitfähig:A,
jedoch mit selektiver Farbauswahl

Composition: 100% Trevira CS® (polyester)
Specification as King conductive: A,
but with selected colour selection

nur für Tec identity | only for Tec identity



351.033
Schwarz
Midnight black

Valencia ID : P

Sehr robustes Kunstleder, langlebig, desinfektionsmittelbeständig*

Zusammensetzung: Beschichtung: 100% Vinyl/
Träger: 100% Polyester Hi-Loft^{2™}

Spezifikation wie Valencia:A,
jedoch mit selektiver Farbauswahl

* empfohlene Desinfektionsmittel auf Anfrage

Very strong synthetic leather, durable,
resistant to disinfectants*

Composition: Topcoat: 100% Vinyl/
Backing: 100% Polyester Hi-Loft^{2™}

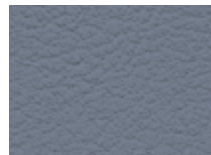
Specification as Valencia: A,
but with selected colour selection

* recommended disinfectants on request

nur für Tec identity | only for Tec identity



306.020 (107-3067)
Standardblau
Classic blue



306.030 (107-4042)
Grau
Metal grey



306.033 (107-9035)
Schwarz
Midnight black

Ultra ID : A

Extrem strapazierfähiger, nachhaltiger Stoff

Zusammensetzung: 72% Cradura (PA),
16% certified virgin wool,
12% redesigned Lenzing FR

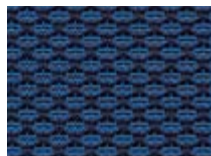
Spezifikation wie Ultra:B,
jedoch mit selektiver Farbauswahl

Extremely durable, sustainable fabric

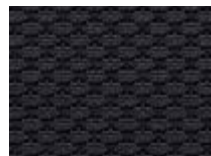
Composition: 72% Cradura™, PA,
16% certified virgin wool, WV,
12% redesigned Lenzing FR™

Specification as Ultra: B,
but with selected colour selection

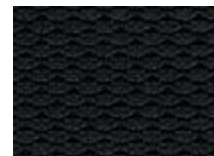
nur für Tec identity | only for Tec identity



353.022 (CX1050-054)
Dunkelblau
Deep blue



353.038 (CX1050-096)
Lavagrau
Lava grey



353.033 (CX1050-099)
Schwarz
Midnight black

BEZUGSSTOFFE UPHOLSTERY FABRICS

Farbabweichungen sind drucktechnisch bedingt und bieten keinen Anlass zu Reklamationen.
Differences in colour compared to the original fabrics are unavoidable in printed catalogues and do not constitute grounds for complaint.

Fabio : P

Zusammensetzung: 100 % Polyester FR
Gewicht: ca. 560 g/m
Breite: 140 cm
Lichtechtheit: Note 5–8 (DIN EN ISO 105-B02)
Pilling: Note 5 (DIN EN ISO 12945/2)
Reibechtheit: nass: 4–5 / trocken: 4–5 (DIN EN ISO 105-X12)
Scheuerfestigkeit: 80.000 Touren (Martindale; DIN EN ISO 12947-2)
Brandverhalten: DIN EN 1021: Teil 1/2, DIN 4102 B1, NF-P 92-503 Klasse M1, BS 5852 IS 0+1, crib 5, UN2 9175/87 (1. IM)
Composition: 100 % Polyester FR
Weight: approx. 560 g/m
Width: 140 cm
Light fastness: value 5–8 (DIN EN ISO 105-B02)
Pilling: value 5 (DIN EN ISO 12945/2)
Fastness to rubbing: wet: 4–5 / dry: 4–5 (DIN EN ISO 105-X12)
Abrasion resistance: 80.000 rubs (Martindale; DIN EN ISO 12947-2)
Flammability: DIN EN 1021: Part 1/2, DIN 4102 B1, NF-P 92-503 Class M1, BS 5852 IS 0+1, crib 5, UN2 9175/87 (1. IM)

außer für Tec identity | except for Tec identity



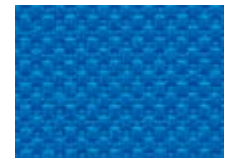
012.047 (3094)
Mandarine
Mandarine



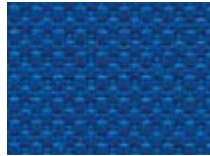
012.041 (4028)
Feuerrot
Züco red



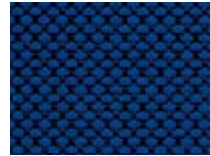
012.048 (4517)
Shirazrot
Shiraz red



012.020 (6075)
Standardblau
Classic blue



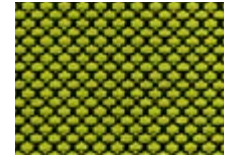
012.027 (6071)
Königsblau
Royal blue



012.022 (6571)
Dunkelblau
Deep blue



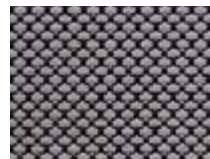
012.029 (6598)
Nachtblau
Midnight blue



012.011 (7541)
Hellgrün
Vivid green



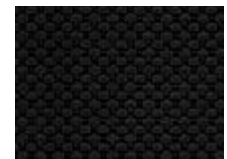
012.110 (7508)
Dunkelgrün
Dark green



012.031 (8532)
Platingrau
Platin



012.039 (8517)
Javagrau
Java grey



012.033 (8033)
Schwarz
Midnight black

King : A

Zusammensetzung: 100% Trevira CS® (Polyester)
Gewicht: ca. 420 g/m
Breite: ca. 140 cm
Lichtechtheit: Note 6 (DIN EN ISO 105-B02)
Pilling: Note 4–5 (DIN EN ISO 12945/2)
Reibechtheit: nass: 4–5 / trocken: 4–5 (DIN EN ISO 105-X12)
Scheuerfestigkeit: 100.000 Touren (Martindale; DIN EN ISO 12947)
Brandverhalten: DIN EN 1021: Teil 1/2, DIN 4102 B1, NF-P 92-503 Klasse M1, BS 5852 IS 0+1, Crib 5, UN2 9175/87 (1. IM)
Composition: 100% Trevira CS® (polyester)
Weight: approx. 420 g/m
Width: approx. 140 cm
Light fastness: value 6 (DIN EN ISO 105-B02)
Pilling: value 4–5 (DIN EN ISO 12945/2)
Fastness to rubbing: wet: 4–5 / dry: 4–5 (DIN EN ISO 105-X12)
Abrasion resistance: 100.000 rubs (Martindale; DIN EN ISO 12947)
Flammability: DIN EN 1021: Part 1/2, DIN 4102 B1, NF-P 92-503 Class M1, BS 5852 IS 0+1, Crib 5, UN2 9175/87 (1. IM)

außer für Tec identity | except for Tec identity



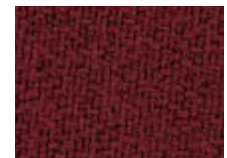
081.044 (4030)
Orange
Orange



081.041 (4027)
Feuerrot
Züco red



081.040 (9244)
Chilliroth
Chilli red



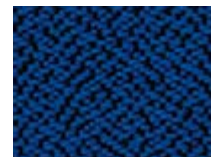
081.042 (4017)
Rubinrot
Rubin red



081.120 (9606)
Hellblau
Light blue



081.021 (6071)
Azurblau
Azure blue



081.020 (9268)
Standardblau
Classic blue



081.025 (6018)
Wasserblau
Lagoon blue



081.011 (7011)
Hellgrün
Vivid green



081.010 (7013)
Grün
Organic green



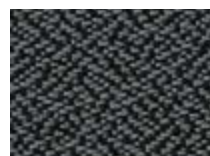
081.110 (7008)
Dunkelgrün
Dark green



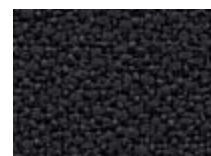
081.022 (6098)
Dunkelblau
Deep blue



081.031 (8027)
Platingrau
Platin



081.030 (9289)
Grau
Metal grey



081.032 (8010)
Steingrau
Stone grey



081.033 (8033)
Schwarz
Midnight black

BEZUGSSTOFFE UPHOLSTERY FABRICS

Farbabweichungen sind drucktechnisch bedingt und bieten keinen Anlass zu Reklamationen.
Differences in colour compared to the original fabrics are unavoidable in printed catalogues and do not constitute grounds for complaint.

King ⚡: A

Polyester leitfähig

Zusammensetzung: 100% Trevira CS® (Polyester)
Gewicht: ca. 405 g/m
Breite: ca. 140 cm
Lichtechtheit: Note 6 (DIN EN ISO 105-B02)
Pilling: Note 5 (DIN EN ISO 12945/2)
Reibechtheit: nass: 4–5 / trocken: 4–5 (DIN EN ISO 105-X12)
Scheuerfestigkeit: 100.000 Touren (Martindale; DIN EN ISO 12947)
Brandverhalten: DIN EN 1021: Teil 1/2, DIN 4102 B1, NF-P 92-503 Klasse M1, BS 5852 IS 0+1, Crib 5, UN2 9175/87 (1. IM)

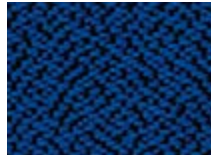
Polyester conductive

Composition: 100% Trevira CS® (polyester)
Weight: approx. 405 g/m
Width: approx. 140 cm
Light fastness: value 6 (DIN EN ISO 105-B02)
Pilling: value 5 (DIN EN ISO 12945/2)
Fastness to rubbing: wet: 4–5 / dry: 4–5 (DIN EN ISO 105-X12)
Abrasion resistance: 100.000 rubs (Martindale; DIN EN ISO 12947)
Flammability: DIN EN 1021: Part 1/2, DIN 4102 B1, NF-P 92-503 Class M1, BS 5852 IS 0+1, Crib 5, UN2 9175/87 (1. IM)

außer für Tec identity | except for Tec identity



⚡ = leitfähig | conductive



151.020 ⚡ (9268)
Standardblau
Classic blue



151.022 ⚡ (6098)
Dunkelblau
Deep blue



151.030 ⚡ (9289)
Grau
Metal grey



151.033 ⚡ (8033)
Schwarz
Midnight black

Madrid ⚡: A

Kunstleder leitfähig

Zusammensetzung: 89% PVC-Compound, 11% PES/BW
Gewicht: ca. 650 g/m²
Breite: 137 cm
Reibechtheit: nass: 4 / trocken: 4 (DIN EN ISO 105-X12)
Scheuerfestigkeit: 40.000 Touren (Martindale; DIN EN ISO 5470-2)

Conductive imitation leather

Composition: 89% PVC compound, 11% PES/cotton
Weight: approx. 650 g/m²
Width: 137 cm
Fastness to rubbing: wet: 4 / dry: 4 (DIN EN ISO 105-X12)
Abrasion resistance: 40.000 rubs (Martindale; DIN EN ISO 5470-2)

Tec identity : P (313.033)



⚡ = leitfähig | conductive



013.033 ⚡ (F6461486)
Schwarz
Midnight black

Relax : A

Zusammensetzung: 100 % Trevira CS® (Polyester)
Gewicht: ca. 450 g/m
Breite: 140 cm
Lichtechtheit: Note 6 (DIN EN ISO 105-B02)
Pilling: Note 5 (DIN EN ISO 12945/2)
Reibechtheit: nass: 4–5 / trocken: 4–5 (DIN EN ISO 105-X12)

Scheuerfestigkeit: 100.000 Touren (Martindale; DIN EN ISO 12947)

Brandverhalten: DIN EN 1021: Teil 1/2, DIN 4102 B1, NF-P 92-503 Klasse M1, BS 5852 IS 0+1, crib 5, UN2 9175/87 (1. IM)

Composition: 100 % Trevira CS® (polyester)
Weight: approx. 450 g/m
Width: 140 cm

Light fastness: value 6 (DIN EN ISO 105-B02)
Pilling: value 5 (DIN EN ISO 12945/2)
Fastness to rubbing: wet: 4–5 / dry: 4–5 (DIN EN ISO 105-X12)

Abrasion resistance: 100.000 rubs (Martindale; DIN EN ISO 12947)

Flammability: DIN EN 1021: Part 1/2, DIN 4102 B1, NF-P 92-503 Class M1, BS 5852 IS 0+1, crib 5, UN2 9175/87 (1. IM)

außer für Tec identity | not for Tec 24/7 adjust
Relax bico nicht für | not for Tec 24/7 adjust



100.020 (6080)
Standardblau
Classic blue



103.039 (8502)
Javagrau
Java grey



100.033 (8033)
Schwarz
Midnight black

100.xxx = Relax (einfarbig)
Relax (one color)

103.xxx = Relax bico (zweifarbige)
Relax bico (two-tone)

BEZUGSSTOFFE UPHOLSTERY FABRICS

Farbabweichungen sind drucktechnisch bedingt und bieten keinen Anlass zu Reklamationen.
Differences in colour compared to the original fabrics are unavoidable in printed catalogues and do not constitute grounds for complaint.

Valencia : A

Sehr robustes Kunstleder, langlebig, desinfektionsmittelbeständig*

Zusammensetzung: Beschichtung: 100% Vinyl/
Träger: 100% Polyester
Hi-Loft²™
Gewicht: ca. 650 g/m²
Breite: ca. 137 cm
Lichtechtheit: Note 7–8 (DIN EN ISO 105-B02)
Scheuerfestigkeit: 300.000 Touren (Martindale;
DIN EN ISO 12947-2)
Brandverhalten: DIN EN 1021: Teil 1/2,
NF-P 92-503 Klasse M2,
DIN 4102 B2

* empfohlene Desinfektionsmittel auf Anfrage

Very strong synthetic leather, durable, resistant to disinfectants*

Composition: Topcoat: 100% Vinyl/
Backing: 100% Polyester
Hi-Loft²™
Weight: approx. 650 g/m²
Width: approx. 137 cm
Light fastness: value 7–8 (DIN EN ISO 105-B02)
Abrasion resistance: 300.000 rubs (Martindale;
DIN EN ISO 12947-2)
Flammability: DIN EN 1021: Part 1/2,
NF-P 92-503 Class M2,
DIN 4102 B2

* recommended disinfectants on request

außer für Tec identity | except for Tec identity



006.001 (107-2020)
Leuchtgelb
Luminous yellow



006.040 (107-2075)
Chilliroot
Chilli red



006.025 (107-3001)
Wasserblau
Lagoon blue



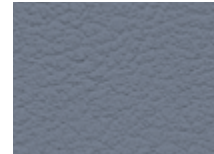
006.020 (107-3067)
Standardblau
Classic blue



006.022 (107-3068)
Dunkelblau
Deep blue



006.010 (107-5041)
Grün
Organic green



006.030 (107-4042)
Grau
Metal grey



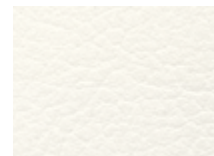
006.039 (107-4002)
Javagrau
Java grey



006.031 (107-4043)
Platingrau
Platin



006.070 (107-8032)
Polarweiß
Arctic white



006.073 (107-8020)
Reinweiß
Pure white



006.033 (107-9035)
Schwarz
Midnight black

Parotega NF : B

Kunstleder, schwer entflammbar, angenehme Haptik, desinfektionsmittelbeständig*

Zusammensetzung: 85 % PVC-Compound,
15 % Baumwolle
Gewicht: ca. 700 g/m²
Breite: 137 cm
Lichtechtheit: Note 5 (DIN EN ISO 105-B02)
Reibechtheit: nass: 4 / trocken: 4–5
(DIN EN ISO 105-X12)
Scheuerfestigkeit: 50.000 Touren (Martindale;
DIN EN ISO 12947-2)
Brandverhalten: DIN EN 1021: Teil 1/2,
DIN 4102 B1,
NF-P 503 Klasse M1,
BS 5852 IS 0+1,
crib 5, UN2 9175/87 (1. IM)

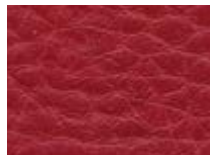
* empfohlene Desinfektionsmittel auf Anfrage

Synthetic leather, flame retardant, soft-touch surface, resistant to disinfectants*

Composition: 85 % PVC-Compound,
15 % Cotton
Weight: approx. 700 g/m²
Width: 137 cm
Light fastness: value 5 (DIN EN ISO 105-B02)
Fastness to rubbing: wet: 4 / dry: 4–5
(DIN EN ISO 105-X12)
Abrasion resistance: 50.000 rubs (Martindale;
DIN EN ISO 12947-2)
Flammability: DIN EN 1021: Part 1/2,
DIN 4102 B1,
NF-P 503 Class M1,
BS 5852 IS 0+1,
crib 5, UN2 9175/87 (1. IM)

* recommended disinfectants on request

außer für Tec identity | except for Tec identity



039.042 (F6461665)
Rubinrot
Rubin red



039.025 (F6461709)
Wasserblau
Lagoon blue



039.027 (F6461710)
Königsblau
Royal blue



039.052 (F6461658)
Fango
Fango



039.037 (F6461731)
Vulkangrau
Vulcan grey



039.033 (F6461659)
Schwarz
Midnight black

BEZUGSSTOFFE UPHOLSTERY FABRICS

Farbabweichungen sind drucktechnisch bedingt und bieten keinen Anlass zu Reklamationen.
Differences in colour compared to the original fabrics are unavoidable in printed catalogues and do not constitute grounds for complaint.

Fame : B

Zusammensetzung: 95 % New Zealand-Wolle, 5 % Polyamid
Gewicht: ca. 630 g/m
Breite: ca. 140 cm
Lichtechtheit: Note 5–7 (DIN EN ISO 105-B02)
Pilling: Note 4 (DIN EN ISO 12945/2)
Reibechtheit: nass: 4–5 / trocken: 4–5 (DIN EN ISO 105-X12)
Scheuerfestigkeit: 200.000 Touren (Martindale; DIN EN ISO 12947-2)
Brandverhalten: DIN EN 1021: Teil 1/2

Composition: 95 % New Zealand-wool, 5 % Polyamide
Weight: approx. 630 g/m
Width: approx. 140 cm
Light fastness: value 5–7 (DIN EN ISO 105-B02)
Light fastness: value 4 (DIN EN ISO 12945/2)
Fastness to rubbing: wet: 4–5 / dry: 4–5 (DIN EN ISO 105-X12)
Abrasion resistance: 200.000 rubs (Martindale; DIN EN ISO 12947-2)
Flammability: DIN EN 1021: Part 1/2

außer für Tec identity | except for Tec identity



078.002 (62067)
Limonengelb
Lime yellow



078.044 (63016)
Orange
Orange



078.041 (64119)
Feuerrot
Züco red



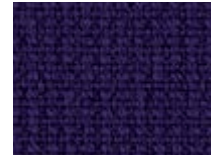
078.040 (64089)
Chillirod
Chilli red



078.027 (66075)
Königsblau
Royal blue



078.020 (66032)
Standardblau
Classic blue



078.022 (66005)
Dunkelblau
Deep blue



078.010 (68035)
Grün
Organic green



078.036 (60017)
Anthrazitgrau
Asphalt grey



078.033 (60999)
Schwarz
Midnight black

Select : B

Strapazierfähiger Wollstoff
Zusammensetzung: 85 % New Zealand Wolle, 15 % Polyamid
Gewicht: ca. 510 g/m
Breite: ca. 140 cm
Lichtechtheit: Note 5–8 (DIN EN ISO 105-B02)
Pilling: Note 4 (DIN EN ISO 12945/2)
Reibechtheit: nass: 4–5 / trocken: 4–5 (DIN EN ISO 105-X12)
Scheuerfestigkeit: 200.000 Touren (Martindale; DIN EN ISO 12947-2)
Brandverhalten: BS EN 1021-1 Cigarette, BS EN 1021-2 Match, BS 5852 Part 1 0,1 Cigarette & Match, The Furniture and Furnishing Regulations 1988, BS 5852 Crib 5, IMO MSC 307(88) Annex 1 part 8, MED Certificate IMO, IMO MSC 307(88) Annex 1 part 8 UK, MED Certificate IMO UK, CA TB 117-2013

Durable wool fabric
Composition: 85 % New Zealand-wool, 15 % polyamide
Weight: approx. 510 g/m
Width: approx. 140 cm
Light fastness: value 5–8 (DIN EN ISO 105-B02)
Pilling: value 4 (DIN EN ISO 12945/2)
Fastness to rubbing: wet: 4–5 / dry: 4–5 (DIN EN ISO 105-X12)
Abrasion resistance: 200.000 rubs (Martindale; DIN EN ISO 12947-2)
Flammability: BS EN 1021-1 Cigarette, BS EN 1021-2 Match, BS 5852 Part 1 0,1 Cigarette & Match, The Furniture and Furnishing Regulations 1988, BS 5852 Crib 5, IMO MSC 307(88) Annex 1 part 8, MED Certificate IMO, IMO MSC 307(88) Annex 1 part 8 UK, MED Certificate IMO UK, CA TB 117-2013

außer für Tec identity | except for Tec identity



184.053 (60005)
Sand
Sand



184.050 (61184)
Cappuccino
Cappuccino



184.052 (61189)
Fango
Fango



184.004 (62098)
Currygelb
Curry yellow



184.046 (65117)
Pink
Pink orchid



184.040 (64216)
Chillirod
Chilli red



184.010 (68210)
Grün
Organic green



184.016 (67101)
Wassergrün
Ice green



184.025 (66191)
Wasserblau
Lagoon blue



184.018 (67099)
Opalgrün
Opal green



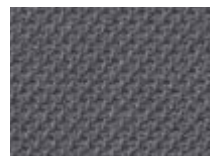
184.022 (66144)
Dunkelblau
Deep blue



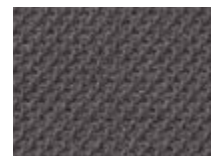
184.024 (61190)
Lila
Lila



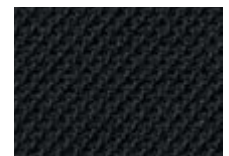
184.032 (60132)
Steingrau
Stone grey



184.030 (60003)
Grau
Metal grey



184.039 (60134)
Javagrau
Java grey



184.033 (60999)
Schwarz
Midnight black

BEZUGSSTOFFE UPHOLSTERY FABRICS

Farbabweichungen sind drucktechnisch bedingt und bieten keinen Anlass zu Reklamationen.
Differences in colour compared to the original fabrics are unavoidable in printed catalogues and do not constitute grounds for complaint.

Ultra : B

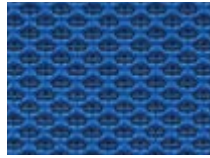
Extrem strapazierfähiger, nachhaltiger Stoff

Zusammensetzung: 72% Cradura (PA),
16% certified virgin wool,
12% redesigned Lenzing FR
ca. 437 g/m
ca. 140 cm
Gewicht:
Breite:
Lichtechtheit: Note 6–7 (DIN EN ISO 105-B02)
Pilling: Note 4 (DIN EN ISO 12945/2)
Reibeichtheit: nass: 4–5 / trocken: 4–5
(DIN EN ISO 105-X12)
Scheuerfestigkeit: 500.000 Touren (Martindale;
DIN EN ISO 12947-2)
Brandverhalten: DIN EN 1021-1/2, BS 5852-0/1,
California TB 117

Extremely durable, sustainable fabric

Composition: 72% Cradura™, PA,
16% certified virgin wool, WV,
12% redesigned Lenzing FR™
approx. 437 g/m
approx. 140 cm
Weight:
Width:
Light fastness: value 6–7 (DIN EN ISO 105-B02)
Pilling: value 4 (DIN EN ISO 12945/2)
Fastness to rubbing: wet: 4–5 / dry: 4–5
(DIN EN ISO 105-X12)
Abrasion resistance: 500.000 rubs (Martindale;
DIN EN ISO 12947-2)
Flammability: DIN EN 1021-1/2, BS 5852-0/1,
California TB 117

außer für Tec identity | except for Tec identity



153.019 (CX1050-051)
Indigoblau
Indigo blue



153.022 (CX1050-054)
Dunkelblau
Deep blue



153.110 (CX1050-081)
Dunkelgrün
Dark green



153.035 (CX1050-093)
Graphitgrau
Graphite



153.038 (CX1050-096)
Lavagrau
Lava grey



153.033 (CX1050-099)
Schwarz
Midnight black

Xtreme : B

Zusammensetzung: 100% recyceltes Polyester
ca. 310 g/m²
Gewicht:
Breite: 140 cm
Lichtechtheit: Note 6 (DIN EN ISO 105-B02)
Pilling: Note 5 (DIN EN ISO 12945/2)
Reibeichtheit: nass: 4 / trocken: 4
100.000 Touren (Martindale;
DIN EN ISO 12947)
Scheuerfestigkeit:
Brandverhalten: DIN EN 1021: Teil 1/2,
DIN 4102 B1,
BS 7176 Medium Hazard,
UNI 9175 Class 1 IM

Composition: 100% recycled polyester
approx. 310 g/m²
Weight:
Width: 140 cm
Light fastness: value 6 (DIN EN ISO 105-B02)
Pilling: value 5 (DIN EN ISO 12945/2)
Fastness to rubbing: wet: 4 / dry: 4
Abrasion resistance: 100.000 rubs (Martindale;
DIN EN ISO 12947)
Flammability: DIN EN 1021: Part 1/2,
DIN 4102 B1,
BS 7176 Medium Hazard,
UNI 9175 Class 1 IM

außer für Tec identity | except for Tec identity



005.040 (YS079)
Chillrot
Chilli red



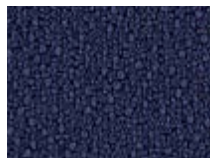
005.049 (YS084)
Aubergine
Aubergine



005.027 (YS082)
Königsblau
Royal blue



005.022 (YS005)
Dunkelblau
Deep blue



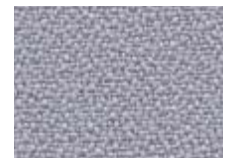
005.028 (YS026)
Marineblau
Navy blue



005.029 (YS100)
Nachtblau
Midnight blue



005.015 (YS047)
Waldgrün
Emerald green



005.031 (YS094)
Platingrau
Platin



005.032 (YS141)
Steingrau
Stone grey



005.034 (YS046)
Dunkelgrau
Oxid grey



005.037 (YS081)
Vulkangrau
Vulcan grey



005.033 (YS009)
Schwarz
Midnight black

BEZUGSSTOFFE UPHOLSTERY FABRICS

Farbabweichungen sind drucktechnisch bedingt und bieten keinen Anlass zu Reklamationen.
Differences in colour compared to the original fabrics are unavoidable in printed catalogues and do not constitute grounds for complaint.

Leder : E

Anilinfärbtes leicht mit Pigmentfarbe abgedecktes Rindsberleder, sehr strapazierfähig, vollnarbig.

Nappaleder pigmentiert (Semi-Anilinleder)

Lichtechtheit: Note 3 (DIN EN ISO 105-B02)
Reibechtheit: nass: 4–5 / trocken: 4–5 (DIN EN ISO 11640)
Brandverhalten: DIN EN 1021: Teil 1/2

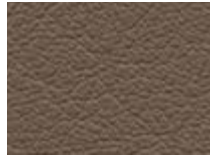
nur für 24h-Drehsessel

Aniline dyed cowhide leather with light pigment dyeing, very hard wearing, full-grain.

Pigmented Nappa leather (semi-aniline leather)

Light fastness: value 3 (DIN EN ISO 105-B02)
Fastness to rubbing: wet: 4–5 / dry: 4–5 (DIN EN ISO 11640)
Flammability: DIN EN 1021: Part 1/2

only for 24-hour swivel chairs



001.052 (Atlantic torf)
Fango
Fango



001.069 (Atlantic tabak)
Terrabraun
Terra brown



001.035 (Atlantic graphit)
Graphitgrau
Graphite



001.072 (Atlantic kiesel)
Kaschmirweiß
Cashmere



001.070 (Atlantic weiss)
Polarweiß
Arctic white



001.033 (Atlantic schwarz)
Schwarz
Midnight black

Premium-Leder : F

Feinstes, naturbelassenes Nappaleder.

Anilinfärbtes Rindsberleder der Spitzenklasse. Mit natürlichen Ölen behandelt, tuchweicher Griff, atmungsaktiv, hautsympathisch, feuchtigkeitsregulierend. Wasserlösliche Farben ohne chemische Lösungsmittel.

Premium Echt-Leder

Lichtechtheit: Note 4 (DIN EN ISO 105-B02)
Reibechtheit: nass: 4 / trocken: 3–4 (DIN EN ISO 11640)
Brandverhalten: DIN EN 1021: Teil 1/2, DIN 75200

nur für 24h-Drehsessel

The finest natural Nappa leather top quality.

Aniline dyed cowhide leather. Treated with natural oils, fabric-soft touch, breathable, dermatologically safe, moisture control. Water-soluble dyes without solvents.

Premium leather

Light fastness: value 4 (DIN EN ISO 105-B02)
Fastness to rubbing: wet: 4 / dry: 3–4 (DIN EN ISO 11640)
Flammability: DIN EN 1021: Part 1/2, DIN 75200

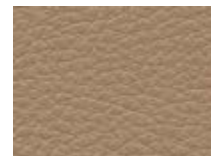
only for 24-hour swivel chairs



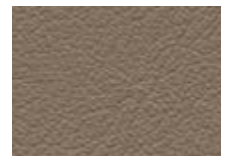
029.041 (34910-F03)
Feuerrot
Züco red



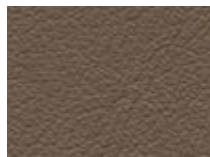
029.048 (34910-S08)
Shirazrot
Shiraz red



029.053 (34910-GEO)
Sand
Sand



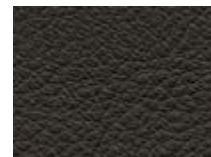
029.050 (34910-G03)
Cappuccino
Cappuccino



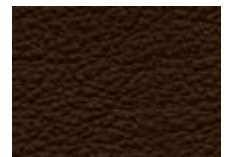
029.052 (34910-B16)
Fango
Fango



029.064 (34910-B13)
Tabakbraun
Tabak brown



029.062 (34910-GEP)
Pfefferbraun
Brown pepper



029.061 (34910-G01)
Dunkelbraun
Walnut



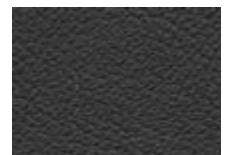
029.027 (34910-S18)
Königsblau
Royal blue



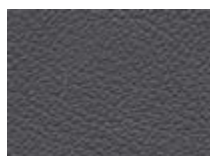
029.031 (34910-S05)
Platingrau
Platin



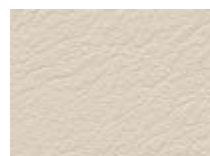
029.032 (34910-E08)
Steingrau
Stone grey



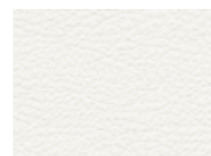
029.035 (34910-A02)
Graphitgrau
Graphite



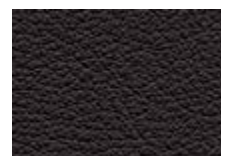
029.036 (34910-EG2)
Anthrazitgrau
Asphalt grey



029.072 (34910-G16)
Kaschmirweiß
Cashmere



029.073 (34910-P07)
Reinweiß
Pure white



029.033 (34910-T01)
Schwarz
Midnight black



MATERIALIEN MATERIALS

Farbabweichungen sind drucktechnisch bedingt und bieten keinen Anlass zu Reklamationen.
Differences in colour compared to the original fabrics are unavoidable in printed catalogues and do not constitute grounds for complaint.

Holz

Arbeitsstühle | Work chairs

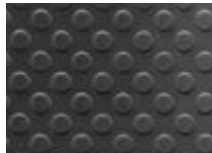
nur für Tec basic und Tec profile XW (Holz)
only for Tec basic and Tec profile XS (wood)



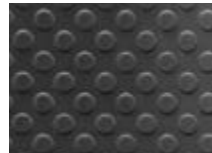
HBN
Buche natur
Natural beech

PU (Polyurethan)

Arbeitsstühle | Work chairs



PURGS
PU schwarz
Black PU
Tec profile



PUSGS
PU soft, schwarz
Black, soft PU
Tec identity,
Tec profile,
Tec profile XS



PUSXS
PU soft, silber
Silver, soft PU
Tec profile



PURGS
PU schwarz
Black PU
Tec basic